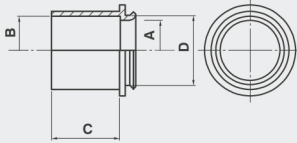


## Medium type Plastic conduit systems (750Nt)



RAL 9004



Assembled with  
DUROSOL PLUS Junction box

Patents protected  
1010513





### DUROSOL® PLUS ISR Adaptor

#### Properties

Raw material

Halogen free, heavy metals free (RoHS) and specially stabilized thermoplastic PO blend

Type	Part number	A	R	C	D		
Ø16	4051016	13	16	18.5	20	4x30	1920
Ø20	4051020	16.5	20	20	20	4x30	1200
Ø25	4051025	21.5	25	32	33	20	1260
Ø32	4051032	27.5	32	35	33	20	960

**Installation guidelines:** Assembled with DUROSOL PLUS junction boxes after removing their seals or grommets. Adaptors Ø16 and Ø20 can be mounted on junction boxes with type Ø16/20 and Ø20/16 while Ø25 and Ø32 can be mounted with the type Ø25/32.